

selective mutism  
&  
autistic gestures  
on stage

A poc journey

Meloe Gennai

[Meloe.gennai@gmail.com](mailto:Meloe.gennai@gmail.com)

Meloegennai.com

# Preamble: escaping white & western narratives

- Travelling back in time, sharing, listening.
- Complexity as a tool
- Community work as a practice

ON STAGE  
with Queersmith &  
Meloe Gennai

A. selective mutism

B. autistic gestures

# Queersmth

Is a theater company based in Geneva Switzerland, which consists of artists of color who are in majority autistic.

# Queersmth

Is low key on facebook

<https://www.facebook.com/queersmth>

# Queersmth

Une pièce collaborative de QUEERSMTH / Direction artistique, performance, texte et mise en scène Meloe Gennai / Design sonore Jazil A. Santschi / Scénographie Sol Pagliai / Design vidéo Ali-Eddine Abdelkhalek / Chorégraphie Titilayo Adebayo / Script Meloe Gennai / Dramaturgie Siméon Martinel, Kami Mathiasin / Design lumières Adele N'Dri N'Guessan, Thibault Villard / Costumes Luca X. Tanner / Assistante costumes Sophie Seiler / Chaussures I S E wearable artefacts / Vidéos Rosida Koyuncu, Silvi Plat, Camille Aleña / Surtitrage Noa Roquet / Design graphique Sol Pagliai / Assistant.ex mise en scène & coordination artistique Sol Pagliai, Jazil A. Santschi / Administration, diffusion Ness, Sol Pagliai, Caroline Froelich / Accessibilité Amelia Lander Cavallo, [Barak Adé Soleil](#), Olivier Zimmermann [d'Autisme Genève](#) / Mentors Barak Adé Soleil, Jérôme Richer, Barokka Khairani / Yeux extérieurs Thiané Cissé, Delphine, Rose / Coproduction TU – Théâtre de l'Usine. Avec le soutien de la Ville de Genève, la Loterie Romande, Premio – Prix d'encouragement pour les arts de la

Meloe Gennai

It's me. I'll share my website at  
the end and feel free to ask me  
questions <3

ON STAGE  
with Queersmith &  
Meloe Gennai

A. selective mutism

B. autistic gestures



# A. Selective mutism

What is selective mutism for you or in you?

What questions does the expression „selective mutism“ raise in you?

# A. Selective mutism

How can I understand selective mutism in the herstory / history of silence / silencing in my indigenous and african ancestry in jamaica?

How can I move beyond diagnosis, when I know my diagnosis comes from privilege?

How do I navigate stage presence as someone who sometimes unexpectedly is mute?

# A. Selective mutism

- Silence and marooning
- Silence and silencing
- Humming and being
- What do you hear in the femme Black voice?

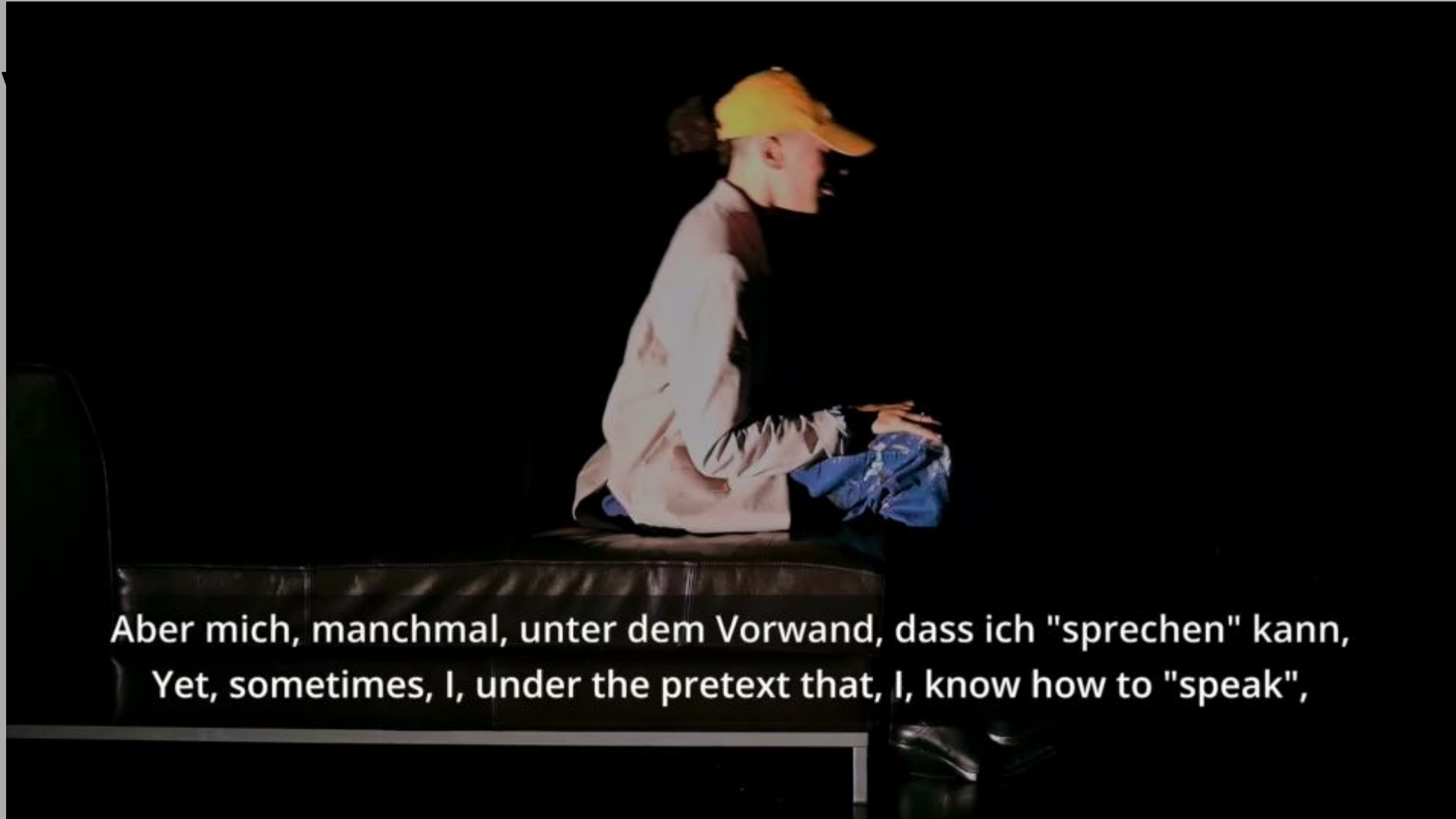
# **SNOB – agency in selective mutism**

SNOB is a character who navigates in their various identities and heritages.

SNOB journeys through labels to move beyond them.

SNOB is supported by props and people on stage. This dramaturgical choice shows the interconnection and mutual care that happens between marginalized people of color.

# SNOB – agency in selective mutism



Aber mich, manchmal, unter dem Vorwand, dass ich "sprechen" kann,  
Yet, sometimes, I, under the pretext that, I, know how to "speak",

## **B. Autistic gestures**

Can you write down examples of movements you do on a piece of paper or in the chat?

## **B. Autistic gestures**

Flapping

Tiptoeing

Swirling

Jumping

Swinging

**Dancing**

**Running**

# About Annie – tiptoeing & swirling





# About Annie – listening to the femme Black voice



# My contact

- INSTA: @meloesapphire
- Mail: [meloe.gennai@gmail.com](mailto:meloe.gennai@gmail.com)
- Meloegennai.com